

# NEWS YOU CAN USE



## WEEKLY CONNECTION WITH GARY OLSEN

The 2024 Olympic games have been taking place over the last two weeks and came to a close this last weekend. Many of you may have heard me mention during Employee Updates that my wife is a huge sports fan. So of course, she watched as much of the Olympic games as she could. She would then keep me updated as to what was happening, because she knew I did not have the desire or time to watch them, but I do like to know how the USA athletes did. USA took home the most medals, which demonstrates our country's dominance in many different sports.

This made me think about NCHC and how we would perform as a provider in the "mental health, substance abuse, nursing home care" Olympics. I feel we have a very strong team here at NCHC that puts our organization in the GOLD category for the services we provide. Our Person-Centered Service, and adherence to our CORE values, give us a huge advantage over other "teams." We have so many GOLD caliber employees that I am very proud to say are a part of NCHC. We even had an UltiPro module this month dedicated to the Infection Prevention Olympics, that showcased our dedication to infection prevention in our organization. So 'Thank you' to everyone who helps our organization be a top contender and helps to set a strong standard in providing the best "GOLD" service to all those who we serve.

*Gary D. Olsen*  
**Gary Olsen**  
 Executive Director

**MOUNT VIEW CARE CENTER**

**banana split**

Fundraiser

**TUESDAY, AUGUST 13TH**  
 10:30 a.m. - 12:00 p.m.  
 In the Courtyard

Yummy!

only \$4.00

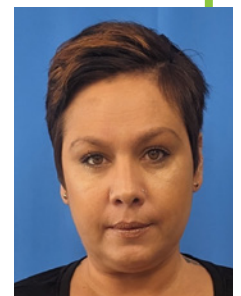
All proceeds go to resident life enrichment programming!

|                                      |     |
|--------------------------------------|-----|
| Campus Alert for 8/13 .....          | 2   |
| WI Deferred Compensation Program ... | 2   |
| Meet Our New Employees .....         | 3   |
| Fall Employee Updates .....          | 4   |
| Triplets .....                       | 5   |
| Gabbin' with Gary .....              | 6   |
| Foodie Forecast .....                | 7-8 |
| Get Social! .....                    | 9   |



## Natalie Montes, Security

Spending a few hours out of her busy day to search for replacement key! Thank you!  
**Shared By: Angel Kurszewski**



**Occurrence Reporting Hotline**  
**x4488 or 715.848.4488**



Only significant or sentinel events requiring immediate notification to this hotline.



# POLLING LOCATION

## WAUSAU CAMPUS ALERT Lake View Conference Center is a Polling Station on August 13

On Tuesday, August 13, the Lake View Conference Center will serve as a polling station for the Primary Election. The Door 31 entrance will be open from 6:00 am to 8:30 pm. Please be aware that voters sometimes show up at the wrong location for polling even though signage has been placed at the entrances and at the street. Please practice Person-Centered Service and help direct those who arrive at the incorrect doors to get to the correct location for voting.

Lake View Conference Center's Door 31 is on the far SOUTH end of the Campus near the airport. There is not hallway access from the NCHC buildings to this location. Please advise people to drive around and park in Lots D or E for access to the polling stations in Door 31. Thank you!



## WAUSAU COMMUNITY COOKOUT NCHC Outreach

On Tuesday, August 6, Cassandra Kostecky and Caitlin Jeske from Acute Care Services shared NCHC resources on the 400 Block as part of the Wausau Police Department Community Thank You Cook Out. Many resources were shared and it was a great way for people of all ages to interact with our booth and meet people to development those relationship that extend beyond our care and services. Thank you to Cassandra and Caitlin for spending this valuable time on our community.

## WISCONSIN DEFERRED COMPENSATION PROGRAM

### Talk with a Retirement Plan Advisor about the WDC Program!

Meeting with your WDC Retirement Plan Advisor is an easy way to help make sure your savings and spending strategy fits you and your future. Schedule a one-on-one appointment. Additional virtual meeting dates and times can be found at [https://nc\\_wisconsin.timetap.com/#/](https://nc_wisconsin.timetap.com/#/).

#### Next meeting:

Individual Retirement Readiness Review with Shawn Bresnahan

**Wednesday, August 29 • 10am-3pm**

**North Central Health Care Wausau Campus**

**Robin Room**

**(In Administration by HR)**

**2400 Marshall Street, Suite A**

**Wausau, WI 54403**

#### What to bring to your one-on-one meeting once enrolled:

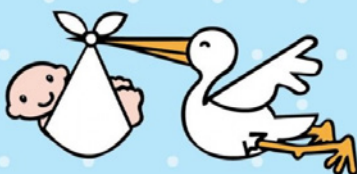
- Wisconsin Retirement System statement
- Social Security statement
- Other retirement account information
- Current paycheck stub (if applicable)

Register online at [https://nc\\_wisconsin.timetap.com/#/](https://nc_wisconsin.timetap.com/#/)



Helping You Turn  
Over a New  
Retirement Leaf

Let's talk  
retirement



Congratulations!

## WELCOME BABY BURGESS

Congratulations to Mackenzie Burgess and her family on the birth of their son, Baker John Burgess. Mackenzie is a CNA at Mount View Care Center. Baker was born August 7 weighing 7lb 9oz, 20 inches. Congratulations!





# WELCOME THESE *New Employees* TO THE TEAM!

These employees were welcomed at Orientation In July and August!

## Pine Crest



**Nicole Schaetzel**  
- Weekend  
Warrior CNA



**Brooklyn Luther**  
- Hospitality Aide



**Katrina Eskola**  
- CNA



**Lenny Newton**  
- LPN



**Destiny Dunlop**  
- Hospitality  
Assistant

## Adult Behavioral Health Hospital



**Tracy Chernetski** -  
Social Worker

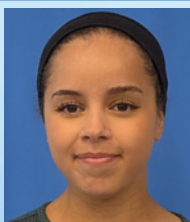
## Mount View Care Center



**Kylee Jakubek**  
- Life Enrichment  
Assistant



**Louianna  
Ramcharitar** -  
CNA



**Ivi Walker** -  
CNA



**Janna Schultz**  
- CNA

## Adult Protective Services



**Taylor Purgett** -  
Protective Service Rep

## Food Services Wausau



**Katana Vang** -  
Dietary Aide



**Bryce Gumz** -  
Dietary Aide



**Yuepheng Lee** -  
Dietary Aide

## Health Information



**Cynthia Gehl** -  
Health Information  
Specialist

*We are so excited to have  
you on our team!*





Come together with your colleagues to stay informed and connected.

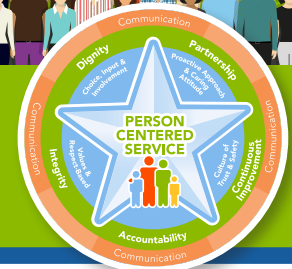
*Fall 2024*

# EMPLOYEE UPDATES



**Join Us for Fall Employee Updates**

Sessions offered September 30 – October 3



*Presented by*  
**GARY OLSEN,**  
EXECUTIVE DIRECTOR

**Scan with Your  
Smartphone Camera App  
to Register!**



If you are  
unable to  
attend in-person,  
a video will be  
available after  
the final session.

Employees can make arrangements to attend one of the in-person sessions by registering in UKG Learning.

**MON, SEPT 30**    **WAUSAU CAMPUS**  
3:00 pm MVCC  
Community Room

**TUES, OCT 1**    **MERRILL CENTER**  
12 Noon Conference Room  
**PINE CREST**  
2:00 pm Classroom

**WEDS, OCT 2**    **WAUSAU CAMPUS**  
6:15 am MVCC  
Community Room  
10:30 am MVCC  
Community Room

**THURS, OCT 3**    **ANTIGO CENTER**  
3 pm Conference Room

**Register Today in UKG Learning!**



## PHOTO OF THE WEEK

### LAST WEEK, TWINS! THIS WEEK TRIPLETS!

Beverly Ann Bailey, Arely Ocampo, and Cassandra Monrreal sent in this great photo - unplanned and everyone dressed the same! Thanks for sharing ladies. Beverly, Arely, and Cassandra are CNA's at Mount View Care Center!



## Looking for NCHC Swag?

Visit the  
*Swag*shop.



[www.norcen.org/SwagShop](http://www.norcen.org/SwagShop)

## August 2024 Organizational Learning Modules



Each month staff are assigned 30-60 minutes of organizational training that needs to be completed by the due date.

## Trainings Have Been Assigned

Log in to *UKG Pro Learning* and complete the following courses:

- **Bloodborne Pathogens and Your Organization's Exposure Control Plan 2.0** (35 minutes)
- **Infection Prevention Olympics** (20 minutes)
- **Complete any outstanding assignments**



North Central Health Care  
Person centered. Outcome focused.



Marathon County  
Employees Credit Union

## BACK TO SCHOOL WITH MCECU

Have a child heading off to school? Make sure they are financially ready with an account set up at MCECU! They don't live in Wausau anymore? No worries! We have them covered with all the products and services they need, regardless of where they live!

- Debit cards to access funds at ATMs or to make purchases
- Remote Deposit Capture (RDC) to deposit checks from the convenience of a smart phone
- Fee-free ATM withdrawals
- Mobile banking
- Bill Pay
- Live customer service by smiling staff who are ready to help

**Are Back-to-School Expenses Adding Up Quickly?**  
**Maybe We Can Help With That Too!**  
**Contact Us Today!**



[www.mcecu.org](http://www.mcecu.org) • [cuteller@co.marathon.wi.us](mailto:cuteller@co.marathon.wi.us)  
715-261-7680 • 400 East Thomas Street

**FREE Piggy Bank When Your Child/Grandchild Opens a Youth Account!**

**Proudly Serving NCHC Employees and Their  
Family Members Since 1965.**



**We want MORE  
Awesome People  
like YOU on  
Our NCHC Team!**

**Be sure to SHARE our  
Career Posts on Social!**



# GABBIN' with GARY

A Monthly Gab Session with  
Executive Director, Gary Olsen

**AUGUST GAB SESSION:**  
**HUMAN RESOURCES**



This month, Gary gabbed with  
Marnie Bredlau and Bo Johnson from  
the Human Resources team.

**Inspired by Core Values &  
Committed to Person-Centered Service!**



# WHAT'S FOR LUNCH?

**WAUSAU CAMPUS EMPLOYEE CAFETERIA**  
OPEN TO ALL NCHC & WAUSAU CAMPUS EMPLOYEES

## BREAKFAST HOURS

8:30 AM – 10:30 AM

## LUNCH HOURS

MONDAY – FRIDAY  
10:30 AM – 1:30 PM  
HOT FOOD BAR &  
SALADS \$.45/OUNCE  
(Weekdays Only)

## GRAB-N-GO HOURS

MONDAY – FRIDAY  
8:30 AM – 5:30 PM  
**WEEKENDS:**  
GRAB-N-GO ONLY

## Daily Hot Sandwich Menu

FEATURING DAILY SPECIALS LIKE GRILLED BEEF & CHEDDAR, CHEESEBURGERS, BBQ SANDWICHES, TUNA MELTS, PIZZA & MORE!!  
Make your own cold or hot sandwich with fixins' OR self-serve at the salad bar.

## AUGUST 12 – 16, 2024

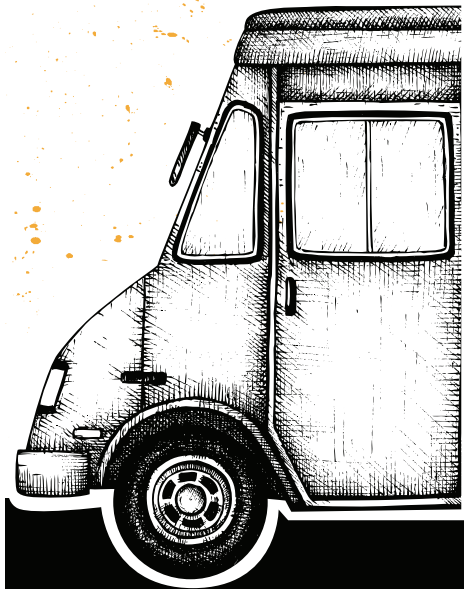
|             | MONDAY   | TUESDAY                                      | WEDS  | THURSDAY                            | FRIDAY                                    |
|-------------|--|--|---|-------------------------------------|---|
| MAIN ENTRÉE | Homestyle Meatloaf<br>Baked Potato<br>Broccoli | Honey Mustard Chicken<br>Rice Pilaf<br>Beets | Breaded Pork Chop<br>O'Brien Potatoes<br>Mixed Vegetables | Mac & Cheese and Ham<br>Green Beans | Chicken Lasagna<br>Breadstick<br>Broccoli |
| SOUP        | Chef's Choice                                  | Cheesy Cauliflower Soup                      | Chili   | Beef Noodle Soup                    | Cream of Broccoli Soup                    |
| SANDWICH    | Chef's Choice                                  | French Dip on Hoagie                         | Breded Fish on Bun  | Hamburger with Fixin's              | Tachos (Loaded Tater Tots)                |
| DESSERT     | Brownie  | Frosted Chocolate Cake                       | Strawberry Yogurt Pie                                     | Dump Cake                           | Cherry Delight                            |

## AUGUST 19 – 23, 2024

|             | MONDAY   | TUESDAY                                      | WEDS   | THURSDAY  | FRIDAY  |
|-------------|--|--|--|---|---|
| MAIN ENTRÉE | Baked Chicken Drumstick<br>Mashed Potatoes<br>Parslied Carrots | Chicken Pasta Alfredo<br>Beets<br>Breadstick | Smoked Pork Loin<br>BBQ Sauce<br>Baked Sweet Potato<br>Buttered Peas | Ranch Meatloaf<br>Garlic Pasta<br>Zucchini & Tomatoes | Battered Fish<br>Country Style<br>Fried Potatoes<br>Creamy Coleslaw |
| SOUP        | Chef's Choice  | Potato Soup                                  | Minestrone Soup  | Beef Vegetable Soup                                   | Split Pea Soup  |
| SANDWICH    | Chef's Choice  | Egg Rolls                                    | Chicken Bacon Flatbread Pizza  | Baked Turkey Berry Wrap                               | Taco Bar  |
| DESSERT     | Mandarin Oranges   | Chocolate Peanut Butter Bar                  | Fruit Crisp  | Monster Cookie  | Blueberry Delight   |



## WAUSAU CAMPUS SUMMER FOOD TRUCKS



**Wausau Campus**  
Mount View Care Center  
LOT B Parking Lot  
**11 am – 2:00 pm**



**Third Thursdays  
of the Month**  
**August 22**

Please note: Food trucks are independently operated and may cancel with little notice. We apologize for any inconvenience.



# THE BISTRO

**NOW OPEN 7 DAYS A WEEK! | WEEKDAYS 7:30AM - 3PM | WEEKENDS: 9:30AM - 5PM**

THE BISTRO WILL BE CLOSED ON WEEKENDS FROM 1-1:30PM TO ACCOMMODATE STAFF BREAKS

\*HOT FOOD IS AVAILABLE AT THE BISTRO DAILY UNTIL 2:30PM \*



## SPECIAL OF THE WEEK

### *Italian Panini*

PROVOLONE | HAM | TURKEY | SALAMI  
PEPPERONCINI | ITALIAN DRESSING

## LATTE OF THE WEEK



### *Pistachio Mocha*

Nutty notes of Hazelnut paired with smooth espresso and steamed milk.

**\$1 OFF LARGE LATTES  
EVERY MONDAY!**

*\*Please note: All sales subject to Sales Tax.*

### *Ice Cream*

ICE CREAM CONE .....1.50  
ICE CREAM SUNDAE .....2.25



### *- build your own -* **BREAKFAST SANDWICH**

EGG + CHEESE .....3.00  
EGG, MEAT + CHEESE .....4.00

#### **PICK YOUR BREAD**

CROISSANT | BAGEL  
ENGLISH MUFFIN

#### **PICK YOUR MEAT**

HAM | SAUSAGE | BACON



# Get Social!

## JOIN US ONLINE

Connect. Learn. Have Fun! Join your NCHC team on social media at the following links. You can leave a review about your job, share a photo in our private groups, or just keep up to date on the latest NCHC News.



### Facebook

#### North Central Health Care

<https://www.facebook.com/NorthCentralHealthCare>



#### Mount View Care Center

<https://www.facebook.com/MountViewCareCenter/>



#### Pine Crest

<https://www.facebook.com/pinecrestmerrill/>



#### NCHC Aquatic Therapy Center

<https://www.facebook.com/NCHCWarmWaterWorks>



#### NCHC Employee Communication Group

<https://www.facebook.com/groups/NCHCTeam/>



#### NCHC Employee Childcare Connection Group

[bit.ly/NCHCEmpChildcare](https://bit.ly/NCHCEmpChildcare)



### X (Twitter)

#### North Central Health Care

[https://x.com/NCHC\\_CentralWI](https://x.com/NCHC_CentralWI)



#### North Central Health Care

<https://bit.ly/LinkedInNCHC>



#### North Central Health Care

<https://indeedhi.re/3YAZxteCare>



#### North Central Health Care

<https://bit.ly/GlassdoorNCHC>



**We want MORE Awesome People like YOU on Our NCHC Team!**

**Be sure to SHARE our Career Posts on Social!**

